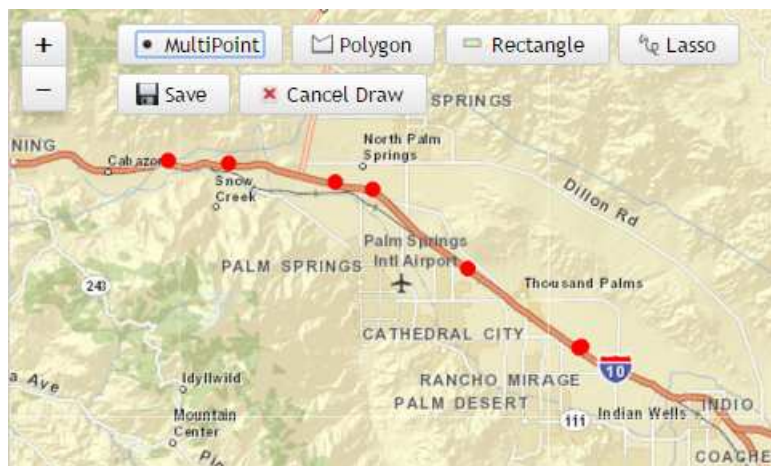


## What is new in the ArcGIS Workflow Manager - JavaScript Viewer?

In the current release of the ArcGIS Workflow Manager JavaScript viewer, we introduced several new features to improve the user experience of the web application.

### Points of Interest (POI)

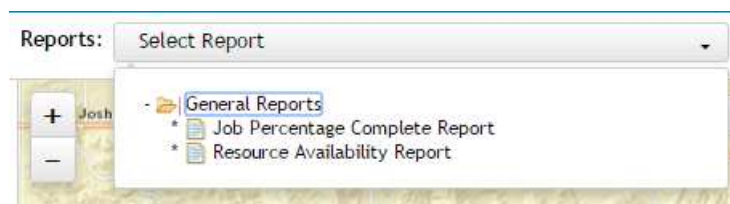
The location of interest (LOI) represents the geographic extent of the job and can be a polygon or point. Its purpose is to highlight where the work related to the job needs to be. The polygon extent of the job are termed area of interest (AOI) and point extent of the job are termed point of interest (POI). Support for POIs were added in ArcGIS Workflow Manager Server 10.4, where previously only AOIs were supported.



### Reports

Reports can be now used to display the information about your jobs as per the configured criterion. Reports provide a way to gather information about the work being managed in your system. Reports are displayed only if you have access to it.

Note: Currently, Dynamic reports using ReportUI token are not supported.



### Default Query

A default query can be configured so that when the application opens, the jobs are displayed based on the specified query.

### Portal User Store

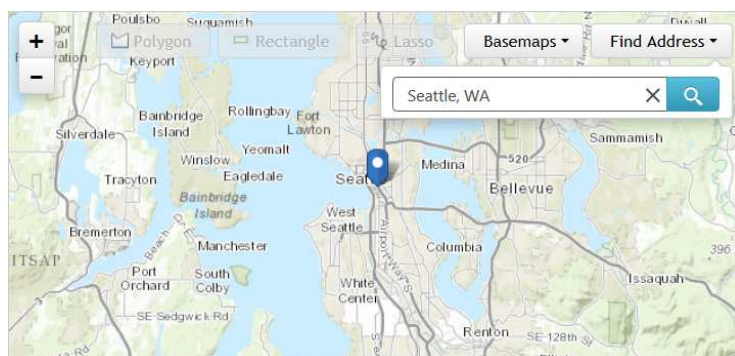
Support for ArcGIS Portal Authentication is now available in addition to the existing authentication methods supported by the web application. With ArcGIS Workflow Manager Server running within a federated ArcGIS Portal / ArcGIS Server environment, the web application can leverage the users from the Portal user store.

In the Portal user store, the users belong to an ArcGIS Portal or Organization, and the users' user name is as defined in the Portal. The users are managed in the Portal, the user profile cannot be edited, and users are assigned to groups in the Workflow Manager Administrator and inherit the privileges based on the Workflow Manager groups.

## Geocoding

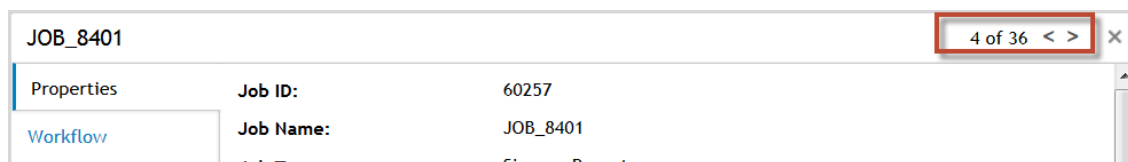
Geocoding functionality has been added to the map to provide easier map navigation. Panning and zooming a map to get to the place you'd like to go can be time consuming and a pain in your wrist. The geocoding search box lets users jump to a location quickly and easily.

The geocoder is preconfigured to use the ArcGIS Global Geocoding service, but can be configured to use other geocoding services.



## Navigate Between Jobs in Job View

Navigating between jobs listed in the job grid or from a map selection have now become easier. No need to close and reopen the Job View dialog to view job information from different jobs. Job navigation has been added to the Job View so that viewing job information from multiple jobs can easily be done by clicking on the arrows at the top of the window. Information about which job you're viewing and the total number of jobs are also available.



## Multi-level Table Lists in Extended Properties

Support for multi-level table lists in Extended Properties has been added. This allows the user to pick a field value from a list of values that further filters the next field to be picked.

JOB\_78122

[Properties](#)  
[Workflow](#)  
[History](#)  
[Extended Properties](#)  
[Attachments](#)  
[Notes](#)  
[Holds](#)

ExtendRequiredAssignment:

store (Store)

Level1

North America

Level2

US

MEX

US

LA

Level5

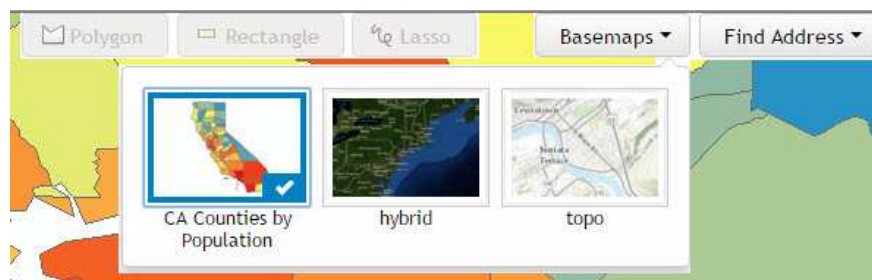
a

### Default Query at Launch of the Application

The JavaScript Viewer allows user to configure a default query in AppConfig.js file using query path. The default query will be opened at launch of the application. Note that the accessibility of queries shall be considered while configuring a user query as default. It can only be opened by the same user. Other users will open the query in top of the query list at launch of the application.

### Use Secure Map Services as Basemaps

Support for secure map services to be used as basemaps has been added to the viewer. This allows users to toggle between different basemaps when viewing the locations of interest on the main view. When a new basemap is selected from the gallery the user may need to login first to gain access to the secure map service.



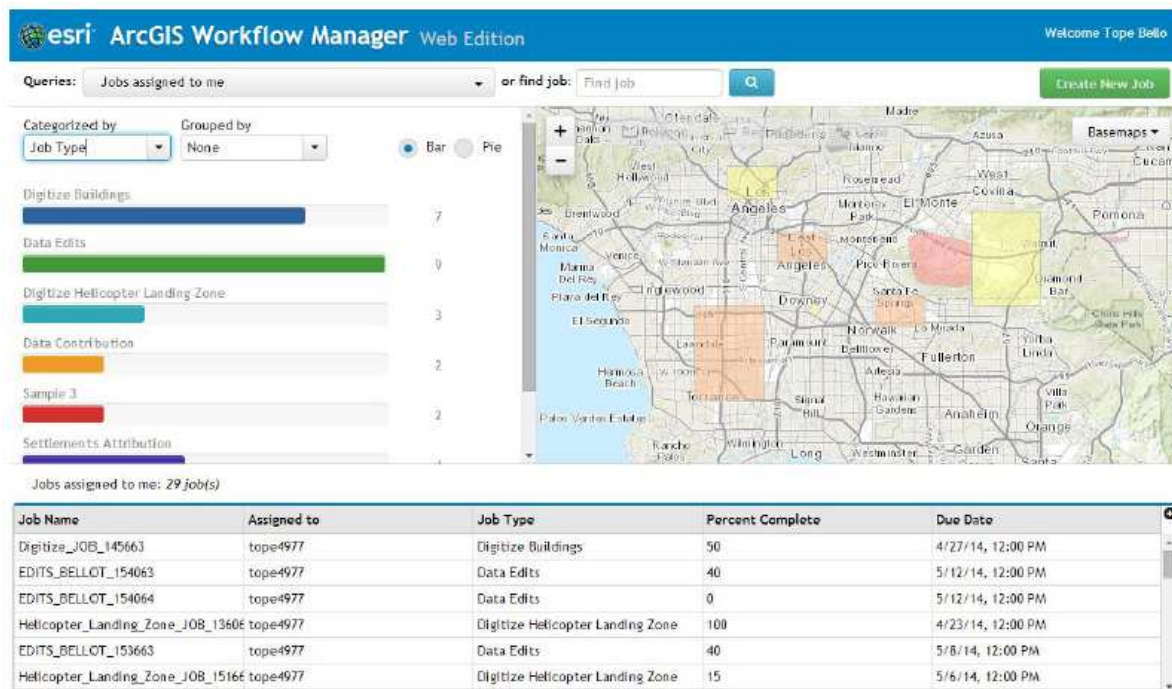
## Getting started with ArcGIS Workflow Manager – Web Edition

You have just installed ArcGIS Workflow Manager Server and configured your workflow manager service. You have also deployed the web application to a web server of your choice.

**Note** - If you need help see the topic on publishing a workflow manager service here. Steps for setting up the viewer is in the root folder of the downloaded viewer. The web application needs to be deployed as an application on a web server.

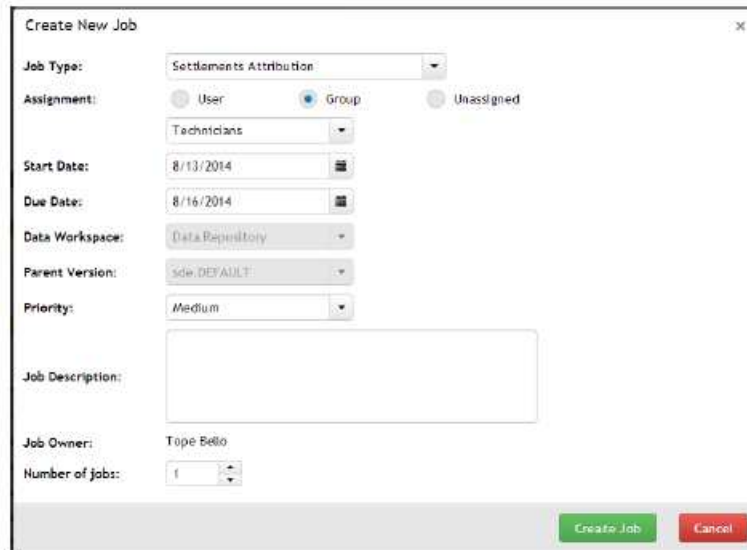
You can log in to the web application and start creating, executing, and managing jobs!

**Note** - Did you know that when you select a job that has an area of interest from the result list, the map will zoom to the extent?



### Creating Jobs

Click the "Create New Job" button to select from a list of configured job types in your system. The job types have workflows associated with them. A job is an instance of the workflow that was authored.



**Create New Job**

Job Type: Settlements Attribution

Assignment: ☐ User ☒ Group ☐ Unassigned

Technicians

Start Date: 8/13/2014

Due Date: 8/16/2014

Data Workspace: Data Repository

Parent Version: sde.DEFAULT

Priority: Medium

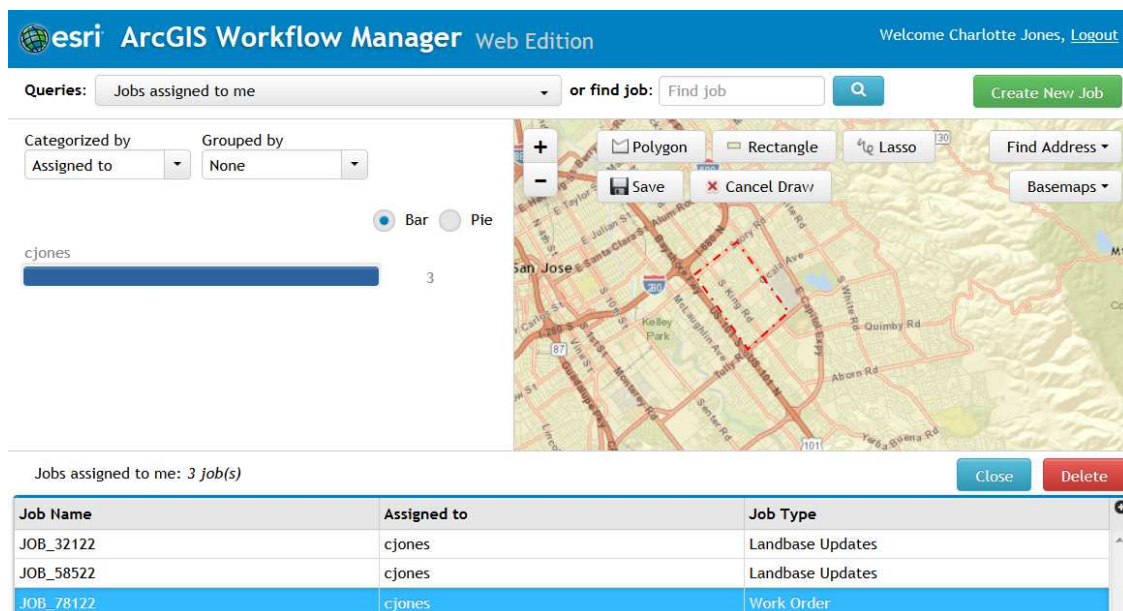
Job Description:

Job Owner: Tape Bello

Number of jobs: 1

Create Job Cancel

Once a job is created, it will be added to the list view. You will notice the map is active with no area of interest (AOI). Select the job and the tools for defining a polygon becomes active.



**esri ArcGIS Workflow Manager Web Edition** Welcome Charlotte Jones, [Logout](#)

Queries: Jobs assigned to me or find job: Find job Create New Job

Categorized by Assigned to Grouped by None

cjones 3

Bar Pie

Jobs assigned to me: 3 job(s) Close Delete

Job Name	Assigned to	Job Type
JOB_32122	cjones	Landbase Updates
JOB_58522	cjones	Landbase Updates
JOB_78122	cjones	Work Order

Draw your desired AOI and save the changes. To access the job details you can select the new polygon.

## Deleting, Closing and Reopening Closed jobs

Click on the “Delete” and “Close” buttons to delete and close jobs that are no longer active or used for reporting purposes. For jobs that have been previously closed, clicking on the “Reopen” button will set the job back to an active state, maintaining the historical information and other properties of the job.

These commands require the user to have the appropriate privileges to be able to perform that action.

2.

4.

Job Type	Percent Complete	Due Date
Digitize Buildings	50	4/27/14, 12:00 PM
Digitize Buildings	10	4/25/14, 12:00 PM
Digitize Buildings	10	4/25/14, 12:00 PM
Digitize Buildings	50	4/25/14, 12:00 PM
Digitize Buildings	100	4/23/14, 12:00 PM
Digitize Buildings	10	7/23/14, 12:00 PM
Digitize Buildings	50	7/23/14, 12:00 PM

Close Delete

Job Type
Landbase Updates
Landbase Updates
Landbase Updates

Reopen Delete

### Filter the results of the map and list by selecting a bar in the charts

Running a query to display jobs that meet a certain criteria is a good way to find jobs of interest. With this new functionality you filter the results of a query by clicking on a pie or bar of interest.

Say you want to see all the jobs of a certain type, you can click on that piece of the chart so that only jobs of that type are displayed both in the map and the list of jobs. This allows you to navigate through a larger list of job to find the actionable jobs. Once a piece of the chart is selected the reset button appears for you to revert to the original query result.



**esri ArcGIS Workflow Manager Web Edition** Welcome Tope Bello

Queries: Jobs assigned to me or find job: Find job Create New Job

Categorized by: Job Type Grouped by: None Reset Bar Pie

**Digitize Buildings** 7

Data Edits 9

Digitize Helicopter Landing Zone 3

Data Contribution 2

Sample 3 2

Settlements Attribution 4

Map Request

Jobs assigned to me: 7 job(s)

Job Name	Assigned to	Job Type	Percent Complete	Due Date
Digitize_JOB_145663	tope4977	Digitize Buildings	50	4/27/14, 12:00 PM
Digitize_JOB_133667 (Carlos)	tope4977	Digitize Buildings	10	4/25/14, 12:00 PM
Digitize_JOB_133675 (Matt F)	tope4977	Digitize Buildings	10	4/25/14, 12:00 PM
Digitize_JOB_133684 (Zac)	tope4977	Digitize Buildings	50	4/25/14, 12:00 PM
Digitize_JOB_133263	tope4977	Digitize Buildings	100	4/23/14, 12:00 PM
Digitize_JOB_188071 (Akiko)	tope4977	Digitize Buildings	10	7/23/14, 12:00 PM
Digitize_JOB_188082	tope4977	Digitize Buildings	50	7/23/14, 12:00 PM

## Properties

You can double click a job in the list view to access more details. By default when you open a job, it opens to the Properties tab.

**Settlement\_Job\_207663**

**Properties**

Job ID: 207663

Job Name: Settlement\_Job\_207663

Job Type: Settlements Attribution

Job Status: Created

% Complete: 0%

AOI: AOI defined

Data Workspace: Data Repository

Version: No Version

Parent Version: sde.DEFAULT

Assignment: ☒ User ☐ Group ☐ Unassigned

Job Owner: Tope Bello

Priority: Medium

Start Date: 8/13/2014

Due Date: 8/16/2014

Job Description:

Update

There are some read-only properties and some editable properties. The properties are controlled by application level privileges so not all properties or functionality will be available to all users.

From the properties you can assign work, set priority, change start or due date or enter a descriptive information about the job.

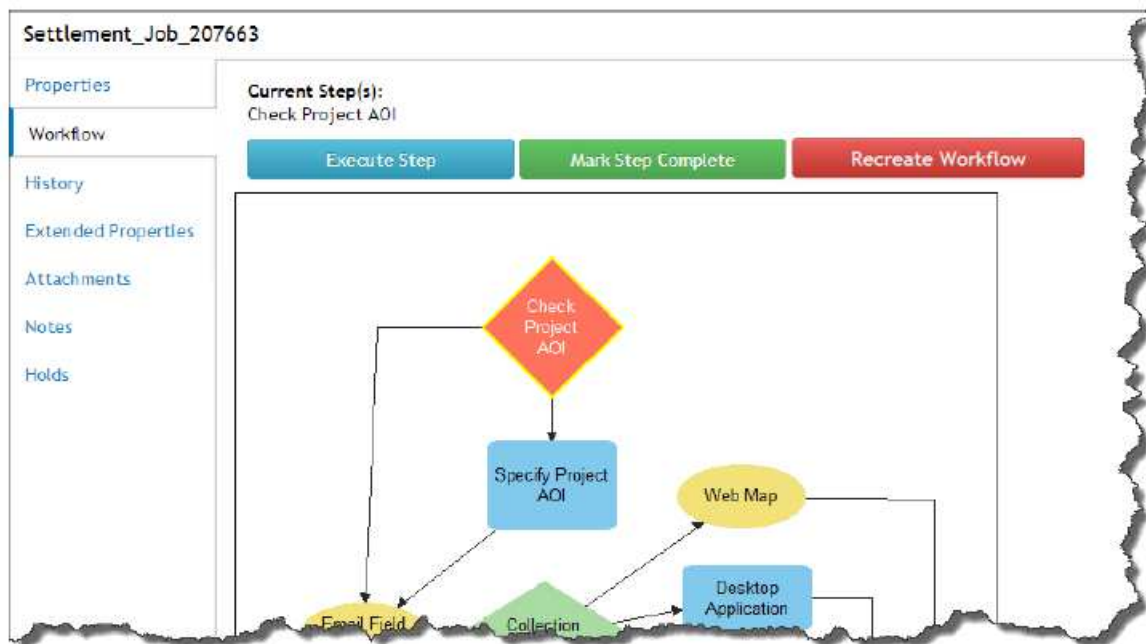
The following properties are currently set to read-only on the web:

- Data workspace
- Parent Version
- Version

After changing the properties, you can click the Update button to save the changes back to the job.

## Workflow

The workflow tab displays a graphic of the job's workflow. It also contains execution tools for performing the job. The Execute Step tools and Mark Step Complete buttons allows you to complete individual or a series of steps. The Recreate Workflow button allows you to update the current job's workflow to the latest job type's workflow after the job was created.



## History

The history tab displays a list of activities that has happened on a job. This logs the action, the actor and when it happened.



You can also add comments to a job as needed. These comments cannot be deleted once they are added. If you are interested in adding comments to delete later, use the notes tab.

## Extended Properties

Extended properties tab contains business specific properties. It displays the fields that are configured as part of the job type and these fields can be modified and saved using the update button.

## Attachments

The ability to add attachments and associate it to a job is now available. These attachments could be used to support the decisions made on a job or as a way to share information to other stake holders.

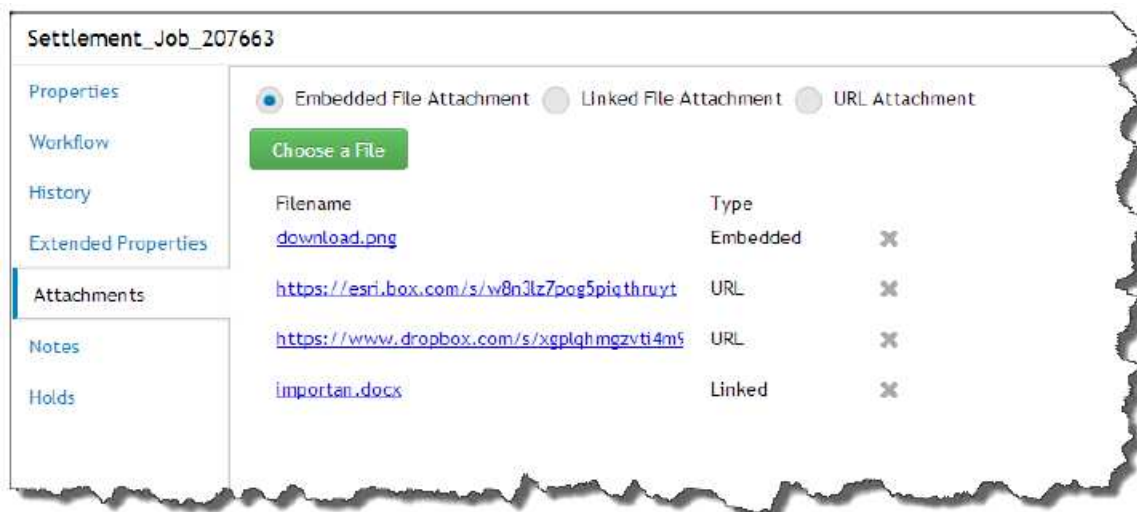
There are 3 types of attachments supported in Workflow Manager – embedded, linked file and URL.

By default, the embedded option is selected. Click choose a file button to select the file you would like to add. Once you select it and click open, the attachment will upload a file into the workflow database and can be retrieved later by anyone that has access to this job.

Using the linked file attachment allows you to specify a file path that you want workflow manager to store a reference to.

The URL attachment option can be used to add reference to already existing document management systems like Dropbox, Box, SharePoint, etc. Since most of these have a URL reference to the documents, you can enter that URL and save it to workflow manager.

To open an attachment, click the highlighted file name. This will open the file in the associated program.



## Notes

The notes tab is a good way to capture information as part of the job. This can be edited or deleted from the job.

## Holds

The holds tab is used to view, add or remove temporary suspensions to the job. A good example is that data is not ready to continue the work so you can put a hold on the job. When a hold is active on a job, this will prevent the execution of the workflow, updating properties associated with the job and a few other job activities. If the reason for the hold is no longer valid, the hold can be released from the job so that work can resume.

**JOB\_78122** Job is currently on hold, some functionality unavailable.

[Properties](#)  
[Workflow](#)  
[History](#)  
[Extended Properties](#)  
[Attachments](#)  
[Notes](#)  
[Holds](#)

ID	Type	Comment	Hold Date
4801	Budget Hold	Waiting for fiscal year end.	August 27, 20
4802	Technical	Require input from development team.	August 27, 20
4803	Missing Data	Need additional data regarding work location.	August 27, 20

Add HoldRelease Hold

## Queries

The queries drop down should contain various filters that will present jobs in the chart, map and list view. The map view will only show jobs that have an area of interest.

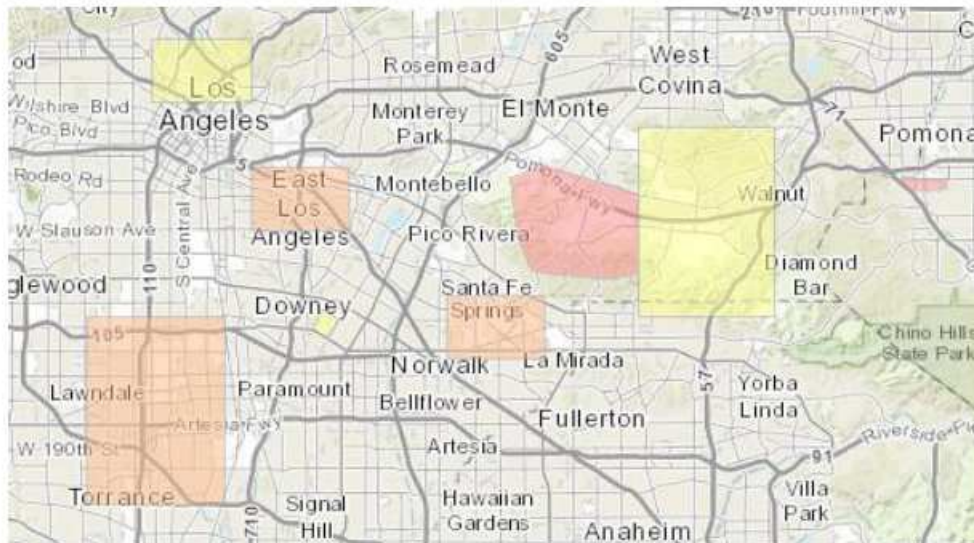
The query results drive the fields available to categorize and group your charts by. For example you can categorize your chart by the job type field and categorize it based on who it is assigned to.

If the list view returns an empty result, that means there are no jobs that meet that criteria. You could start creating jobs.



### Render the area of interest layer based on field from joining the jobs table

The AOI map service configured with the web application can be used to convey job related information. This can be accomplished by joining the Jobs table to the AOI layer inside of ArcMap and symbolizing the layer based on a field of interest. For example, you can set up a color ramp based on job priority/percentage complete/job type. Once the map is published, the AOI layers appears with this symbology in the application.



*Displaying job's AOI based on status*